



TILLER

TRACTOR DRAWN AERIAL

WWW.ROSENBAUERAMERICA.COM



TILLER

TRACTOR DRAWN AERIAL



AVOID DAMAGE WITH AUTO BEDDING

A momentary switch automatically beds the aerial and rotates the monitor to avoid collision with the body or tiller cab.



HOT DIP GALVANIZED CORROSION PROTECTION

The ultimate in corrosion resistance, hot dip galvanized chassis frame rails, torque box, outriggers and aerial. Warranted for 25 years.



SMOOTHEST OPERATING AERIAL ON THE MARKET

The Smart Controls prevent fast takeoffs and hard stops even with a quick release of the single joystick controller.



115' GROUND LADDER STORAGE

Our standard galvanized torque box will accommodate 115' of ground ladders, giving you an ISO certification.



CUSTOMIZED EQUIPMENT STORAGE

Lorem ipsum dolor sit amet, consectetur adipiscing elit, sed do eiusmod tempor incididunt ut labore et dolore magna aliqua.





360° DEGREE OPERATIONS EVEN ON THE SHORT JACKED SIDE

The Rosenbauer SMART Aerial system continually monitors the operations of the aerial allowing for safe operations of the aerial even over a short jacked outrigger.



EASY CAB ALIGNMENT FOR TILLERMAN

Neon green illumination down the center of the aerial assures the tillerman that he's perfectly aligned.



CUSTOMIZED EQUIPMENT STORAGE

Lorem ipsum dolor sit amet, consectetur adipiscing elit, sed do eiusmod tempor incididunt ut labore et dolore magna aliqua. Ut enim ad minim veniam, quis nostrud exercitation ullamco laboris nisi ut aliquip ex ea commodo consequat.



TILLER

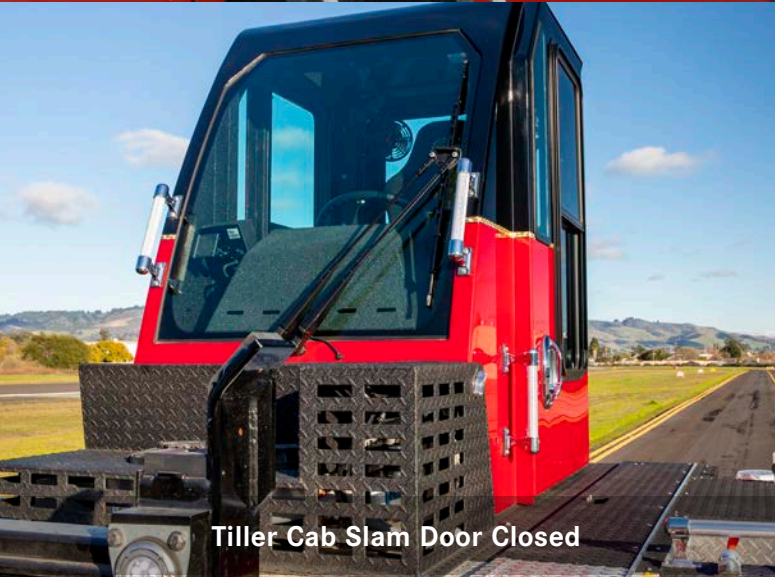
TRACTOR DRAWN AERIAL



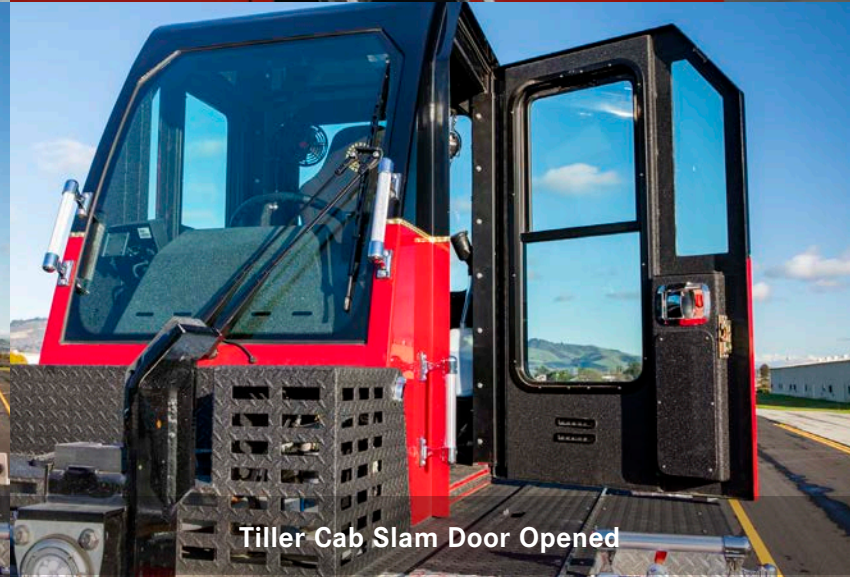
Tiller Cab Sliding Door Closed



Tiller Cab Sliding Door Opened



Tiller Cab Slam Door Closed



Tiller Cab Slam Door Opened



PERFORMANCE TESTED

Rosenbauer's tiller cab is compliant to 2016 NFPA 1901 and SAE J2422, Cab Roof Strength Evaluation – Quasi-Static Loading Heavy Trucks.



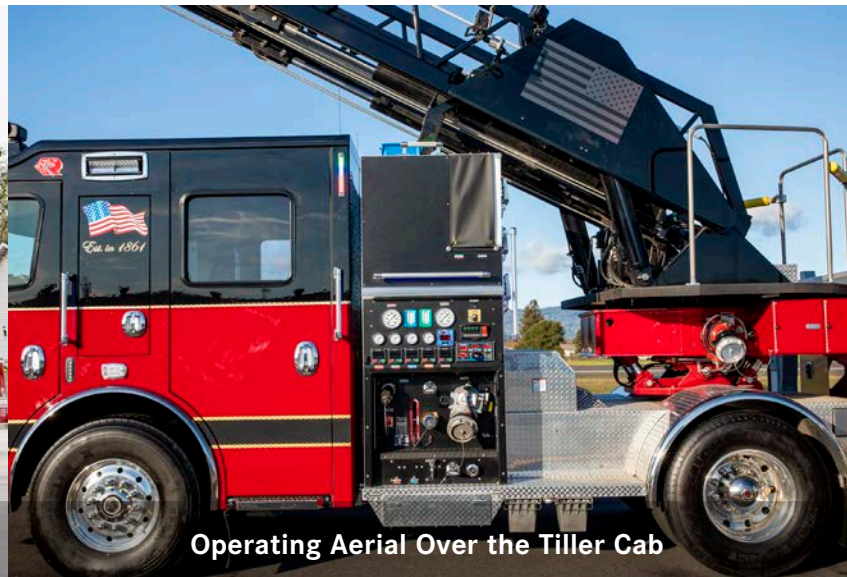
ENGINEERED FOR SAFETY

Egress is engineered to shorten the overall Length.





Operating Aerial Over the Tiller Cab



Operating Aerial Over the Tiller Cab



Cab Collision Protection



Cab Collision Protection

ADDITIONAL OPTIONS



★ IDLE REDUCTION MADE EASY

GREEN Star Idle reduction system shuts down chassis engine when fire pump is not engaged or aerial operations underway. Triggers an APU which uses 1/4 the fuel, saving costs and lowering emissions.

↻ HEALTHY FIREFIGHTERS



Our in cab CleanAir re-circulation air scrubber reduces carcinogenic toxins including large particulates and VOCs, with a 50% reduction of VOCs in 2 minutes and 80% in 5 minutes. Can be included in new builds or retrofit.

⚙️ PUMP SOLUTIONS



You'll find the pump for every need with our full line of proprietary pumps.

We are the only manufacturer to engineer, and manufacture our own state-of-the-art pumps...smaller and lighter with bronze and stainless steel pump hosing options available.



WIRELESS RADIO REMOTE

Traditionally, setting up your aerial for operations is slowed down due to the truck operator being positioned at the rear of the apparatus body for outrigger deployment.

SINGLE JOYSTICK OPERATION

This is the next level of operational control for aerials. The single joystick provides intuitive aerial operations, with the use of only one hand, the operator can control all

three functions simultaneously. Left to right control of the aerial is now left to right movement of the joystick, now all your attention can be on proper placement.



SAFEST AND SMARTEST AERIAL ON THE MARKET

CAN-bus technology continually monitors the set up of the truck including, but not limited to, extension, rotation, elevation, outrigger placement and aerial tip load.

This technology also controls the placement of the monitor to allow for maximum flow all while continually limiting additional stress on the ladder.



PROTECT YOUR PURCHASE

The Viper's advanced CAN-bus electronic system not only prevents the aerial from damaging the cab and body but also any additional items protruding off the cab and body.



INFORMATION OVERLOAD

The Rosenbauer Aerial SMART Screen provides a full range of information, from aerial and outrigger placement to operational parameters based on truck set up, to chassis diagnostics. The screens are provided at all major operational stations including the outrigger location. This allows for maximum information on the fire scene.



FIRST IN SERVICEABILITY

Keeping trucks inservice is our number one goal, that is why we do our best to use products that are available on the market and are not proprietary to Rosenbauer. An aerial service tool is also available for quick and easy diagnostics of the CAN-bus system.




Case not included

24/7 EMERGENCY ASSISTANCE

1-877-543-5591

REGULAR SERVICE SHOULD BE SCHEDULED WITH YOUR LOCAL ROSENBAUER DEALER



ROSENBAUER VIPER™ TILLER

FIREFIGHTERS' WEAPON

Giving firefighters the right weapon means making safety a top priority. We've incorporated the latest technology to automate safety systems and simplify operations. You can rely on your Rosenbauer Viper™ Aerial to make sure everyone goes home.

VIPER™ TILLER PERFORMANCE

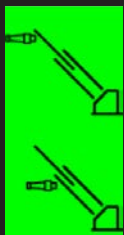
LADDER REACH	100' Vertical Reach
PAYLOAD CAPACITY	500 lbs Wet and Dry
WATERWAY	1250 GPM
ICE RATING	1/4"
BELOW GRADE OPERATIONS	10°
AERIAL CONTROLS	Electric-Over-Hydraulic (SMART Controls)
STABILIZER SPREAD	13'6" - 15'6"
STABILIZER	2 Front Out and Down
APPARATUS BODY	FX, EXT, CT, FL
WATER TANK	300 Gallons
FIRE PUMP	Flow Rates up to 2000 GPM
AERIAL CORROSION WARRANTY	25 Years on galvanized parts

THIRD-PARTY TESTING

All of our aerials must undergo testing by an independent third-party testing company to ensure you get the safest piece of equipment possible.

THREE-PIECE SWIVEL

Our durable, modular design enhances serviceability of your aerial, reducing costly swivel repairs and allowing quick turn around to keep your truck in service.



WATERPAN LATCH

The water pan latch position indicator helps prevent damage to the aerial by showing if the water pan is in water or rescue mode. Green backgrounds show position is detected and the aerial safe to operate. Red background, question mark or yellow flashing warning show pan position is unknown and the water pan latch needs to be reengaged.

STURDY STEEL CONSTRUCTION

Aerials come in one of two ways, hot-dip galvanized steel or painted steel. Hot-dip galvanized steel gives maximum protection against corrosion, making your aerial virtually maintenance free. We dip the entire aerial section and coat the tubing inside and out. Painted steel aerials have great appearance and strength. Either way, you get great value.

All of our aerials are built with 70k and 100k material.

BUILT TO LAST

As aerials are a major investment, Rosenbauer designs for dependability, longevity and serviceability. From the hot-dipped galvanized torque tube, outriggers, aerial and frame rails which prevent corrosion in hidden areas, and the technologically advanced SMART aerial for the safest aerial operations, to the three-piece swivel for ease of service, Rosenbauer aerials are engineered and tested to stay in service for many years to come.

FULL AERIAL WATERWAY

Only tiller available with a full aerial waterway.

AERIAL FINISH OPTIONS

- Painted Full Aerial
- Hot-Dip Galvanized Full Aerial
- Painted - Hot-Dip Galvanized Full Aerial
- Galvanized Painted Base with Galvanized Only Sections

 **ROSENBAUER GROUP**

 **@ROSYFIRE**

 **ROSENBAUERFIRE**

 **ROSENBAUERUS**

Rosenbauer South Dakota, LLC

100 Third Street
Lyons, SD 57041
605.543.5591

Rosenbauer Motors, LLC

5190 260th Street
Wyoming, MN 55092
651.462.1000

Rosenbauer Minnesota, LLC

5181 260th Street
Wyoming, MN 55092
651.462.1000

Rosenbauer Aerials, LLC

870 S Broad Street
Fremont, NE 68025
402.721.7622

ROSENBAUERAMERICA.COM | INFO@ROSENBAUERAMERICA.COM



CONTRACT #022818 | ROSENBAUER AMERICA, LLC
DBA ROSENBAUER SOUTH DAKOTA, LLC & ROSENBAUER MINNESOTA, LLC